


47°10'34.9"N 120°45'37.5"W



47°10'34.9"N 120°45'37.5"W

Directions

SAVE NEARBY SEND TO YOUR PHONE SHARE



Sign in

Browser window showing Google Maps with coordinates 47°10'34.9"N 120°45'37.5"W. The map displays a satellite view of a rural area with a red location pin. The left sidebar contains navigation options: Directions, SAVE, NEARBY, SEND TO YOUR PHONE, and SHARE. The bottom of the map shows the Google logo and copyright information: Imagery ©2016 DigitalGlobe, Landsat, USDA Farm Service Agency, Map data ©2016 Google. 3D Earth view is not available. Terms Send feedback 2000 ft.

https://www.google.com/maps/place/47°10'34.9"N 120°45'37.5"W/@47.1763592,-120.7779263,5261m/data=!3m2!1e3!4b1!4m5!3m4!1s0x0:0x0:8m2!3d47.176358!4d-120.760415

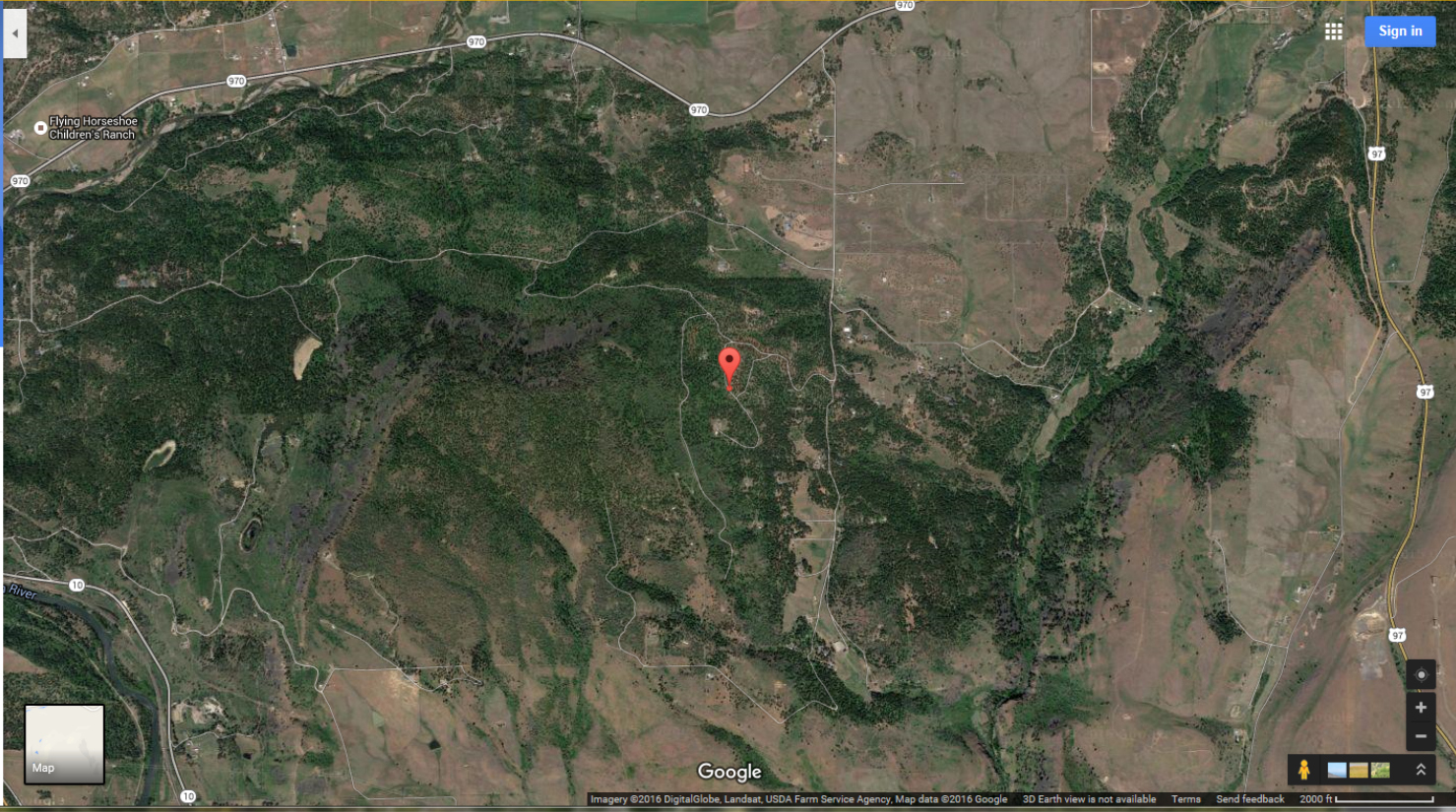
COMPAS 3.0 New tab Kittitas County Home Page Fro... Seasonal Pond - OneDrive 47°10'34.9"N 120°45'37.5"W...

File Edit View Favorites Tools Help
Convert Select
Suggested Sites Communities ArcGIS Res... WAC 365-190-040 Process RCW WSLCB Sign In KCMaps NWPR Home Google CDS LU Code TaxSifter ESA Custom Login O&R Search

Try a fast, secure browser with updates built in Yes, get Chrome now No, not interested

47°10'34.9"N 120°45'37.5"W
Directions

SAVE NEARBY SEND TO YOUR PHONE SHARE



Map

Google
Imagery ©2016 DigitalGlobe, Landsat, USDA Farm Service Agency, Map data ©2016 Google. 3D Earth view is not available. Terms Send feedback 2000 ft